

Three ways members can report a power outage.

Whether a storm, blown transformer or downed power lines, quick reporting can help get the power back on.



With more than one way to report a power outage, it's easy for you to help us identify the problem and restore power as soon as possible. Members can report an outage by phone or online with our Outage Map. Members who register their phones, are also able to report outages by text and receive notifications from us when the power has been restored.



CALL:
800 541 2662

TEXT:
OUT to 85700

ONLINE:
Go Online and use our Outage Map.

SIGN UP FOR TEXT ALERTS: Register your phone* by texting the keyword **FEC** to **85700**.

* Cell phone numbers must be listed on your account. Call the co-op at **800 541 2662** to update your membership records.

**LEARN MORE ABOUT TEXT ALERTS AND
THE OUTAGE CENTER AT: FarmersElectric.coop**



A Touchstone Energy® Cooperative 

We're prepared for summer storms.



by **MARK STUBBS**
General Manager

Summer is here! School is out, and families are gearing up for a few months of fun and relaxation. Although summer brings much fun in the sun, it can also bring the occasional severe storm. In the event of a power outage, you can trust that Farmers Electric Cooperative is ready to respond.

The major cause of most power outages comes from damage to power lines caused by falling trees and branches.

Through right-of-way clearing, we work year-round to ensure that power lines in our service territory stand little risk of being damaged by trees, branches or other types of vegetation.

Despite our best efforts, though, during major storms, damage can occur to transmission stations, substations and power lines. When this happens, our first priority is to safely restore power to as many members as possible in the shortest amount of time. We start by mobilizing our line crews and other critical staff. Every phone line available is used to take your outage report calls. The big problems are handled first—such as damage to transmission lines, which serve thousands of people. These problems must be corrected before we can focus on other areas where more localized damage might have occurred.

Farmers EC's line crews inspect substations to determine if the problem starts there, or if there could be an issue down the line. If the root of the problem is at the substation, power can be restored to hundreds, possibly thousands of members. Next, line crews check the service lines that deliver power into neighborhoods and communities. Line crews repair the damaged lines, restoring power to hundreds of people. If you continue to experience an outage, there might be damage to a tap line outside of your home or business. Make sure you notify Farmers EC so crews can inspect these lines.

We will do our best to avoid power outages, but sometimes Mother Nature has other plans. During a power outage, be sure to use our outage text line and our Outage Map for details. We also post outage information to our social media accounts.

Learn more about Text Alerts and the Outage Center at:
FarmersElectric.coop



STAY SAFE AROUND LIGHTNING.

When summer storms shoot lightning down from the sky, there are several things you can do to keep your family safe. Here is some advice from the National Weather Service:

Stay aware of weather conditions.

A simple forecast can tell you whether you need to delay outdoor activities, put away sports equipment or tools, or simply head inside to avoid danger.

Don't touch. A direct lightning strike can travel through plugged-in computers or TVs. Stay safe by using remote controls to operate electronic devices.

Unplug. To preserve expensive pieces of electronic equipment, unplug them before the storm hits. Once lightning starts, it's not safe to touch those plugs or cords.

Stay off of corded phones. Lightning can travel through a home's wiring. It's OK to make calls on a cell or cordless phone during a lightning storm.

Stay away. Keep a distance from anything that can conduct electricity, like power lines, barbed-wire fences and, of course, metal ladders. Avoid showering or bathing during storms, too, as metal plumbing—and the water inside it—can conduct electricity.

Stay indoors. Don't go outdoors during a lightning storm, and stay away from windows and doors. Even a small leak or conduction point can let lightning into your home.

Learn more at: FarmersElectric.coop.

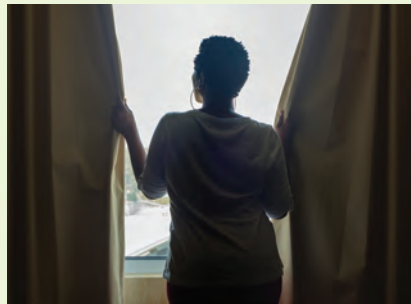
Cool summertime savings strategies.

We're facing another long, hot Texas summer! Here are several ways to use energy more efficiently and save some money on electricity.



AIR-CONDITIONING FILTER

Change the air-conditioning system's filter every three months during cooling season—and more if your neighborhood is especially dusty. Dirty filters stop air from flowing through, which causes your AC to work harder—and use more energy—as it keeps your home cool.



BLOCK WINDOW HEAT

Close the drapes. A sunny day might be pretty to look at through the window, but the sun's rays can heat the air in your home and force the AC to work overtime. Keep curtains and blinds drawn on bright, hot days, especially on south- and west-facing windows.



PROGRAMMABLE THERMOSTAT

If you have a programmable thermostat, instruct it to run the AC only during part of the day. There's no need to keep your house comfortable if nobody's in it during the day. Program the thermostat to turn on the AC an hour before you get home so that it's cool upon your arrival.



CREATE A BREEZE

Use ceiling fans. If you don't have any, consider getting them as a good investment. Install them in bedrooms, the kitchen and the living room. Fans move the air around and make the people in the room feel cooler. They help your air conditioner cool the house for less.



MICROWAVE

Heat up the food, not the house. With a microwave, it's much more efficient (and quicker) to heat food up than with an oven, especially if you are trying to stay cool with air conditioning.



SET YOUR AIR-CONDITIONING TO AUTO

Switch your central air-conditioning system's fan to "auto." The "on" setting forces it to run constantly—even when your house is already cool.

Find more energy & money saving tips at: FarmersElectric.coop

Odds & Ends

Fair, festival, class or show—share your community event with us and we'll help you get the word out with the Farmers EC Community Calendar.

SEND TO: event@FarmersElectric.coop



EVENT SPONSORED IN PART BY FARMERS EC

Rockwall Concert By The Lake

The concert series is a great FREE opportunity for family and friends to get together and enjoy The Harbor while listening to some of DFW's best bands. There is something for everyone with classic rock, Mo' Town, Top 40, country variety, and everything in between.

Every Thursdays at 7:30 pm at The Harbor, 2059 Summer Lee, Rockwall.
Learn more at playrockwall.com

June 1 Random Axis - Pop Variety

June 8 With or Without U2 - U2 Tribute Band

June 15 Mars Hill - Modern Variety

June 22 Local Yoakum - Dwight Yoakum Cover Band

June 29 Limelight - Party Variety



RECIPE

Chocolate Peanut Butter Bombs

INGREDIENTS

- 8 ounces cream cheese
- 3 tablespoons chocolate syrup
- ½ cup powdered sugar
- 12 ounces frozen whipped topping, thawed
- 8 miniature peanut butter cups
- ½ cup hot fudge ice cream topping, warmed
- 2 tablespoons chopped salted peanuts

DIRECTIONS

1. Line eight 6-ounce ramekins or custard cups with plastic wrap and set aside.
2. In a large bowl, beat cream cheese and chocolate syrup until smooth. Beat in powdered sugar, then fold in whipped topping.
3. Spoon mixture into prepared cups and insert a peanut butter cup into the center of each. Cover and freeze 4–5 hours or until firm.
4. Invert frozen bombs onto dessert dishes. Remove cups and plastic wrap. Drizzle with hot fudge topping and sprinkle with peanuts.

Did you know?

The War of the Currents in the late 19th Century was about whether electricity should be distributed as AC or DC. Nikola Tesla and George Westinghouse proposed using AC, while Thomas Edison fought hard for DC. Edison lost the War of the Currents, and power was—and still is—distributed as AC.

Power tip

Avoid setting your thermostat at a colder setting than normal when you turn on your air conditioner. It will not cool your home any faster and could result in excessive cooling and unnecessary higher monthly energy bill.

Calendar

Flag Day - Wednesday, June 14th

Father's Day - Sunday, June 18th